



Colour: DB 703, Design: Doris Herrmann



Colour: DB 703, Design: Doris Herrmann

Planter 710

STAINLESS STEEL

Specifications

Plant pot with curved sides that taper at both ends. The base has apertures which may be sealed with a perforated plate cover. The container stands on rectangular tubes which serve as supports for hoisting equipment. The apertures of the tubes can be covered with removable caps.

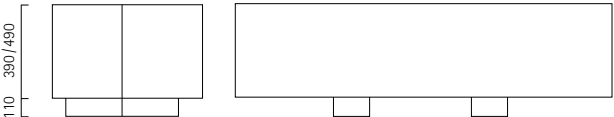
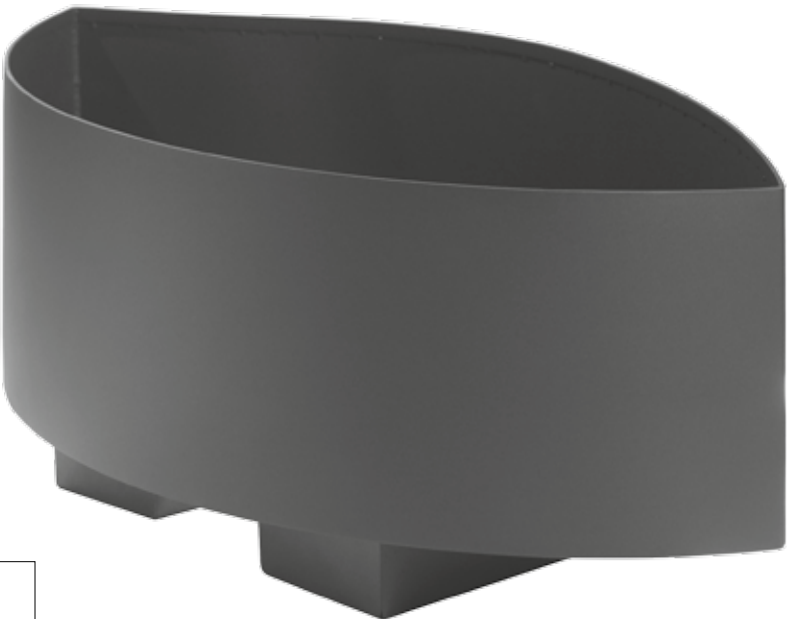
Mounting

Free standing element

Finish

- Stainless steel 1.4301
- Stainless steel 1.4301 with powder coating in standard RAL colours or DB 703
- Other colours available on request at a surcharge
- For details, see catalogue p. 2, price list or online-shop

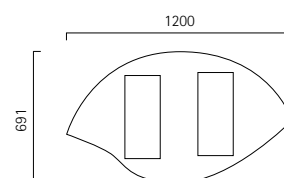
	Stainless steel 1.4301 powder coated	Stainless steel 1.4301
710 S	710.002	710.003
710 M	711.002	711.003
710 L	712.002	712.003
710 XL	713.002	713.003





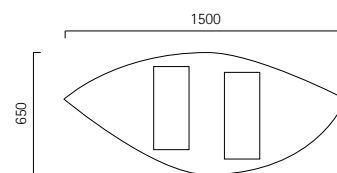
Measurements S

Width: 691 mm (widest point)
 Length: 1200 mm
 Height of side wall: 390 mm
 Height of container, incl. base: 500 mm
 Volume: approx. 210 L
 Weight when empty: approx. 65 kg



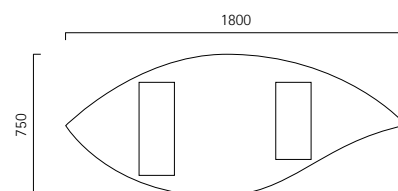
Measurements M

Width: 650 mm (widest point)
 Length: 1500 mm
 Height of side wall: 390 mm
 Height of container, incl. base: 500 mm
 Volume: approx. 250 L
 Weight when empty: approx. 68 kg



Measurements L

Width: 750 mm (widest point)
 Length: 1800 mm
 Height of side wall: 490 mm
 Height of container, incl. base: 600 mm
 Volume: approx. 430 L
 Weight when empty: approx. 85 kg



Measurements XL

Width: 801 mm (widest point)
 Length: 2000 mm
 Height of side wall: 490 mm
 Height of container, incl. base: 600 mm
 Volume: approx. 450 L
 Weight when empty: approx. 87 kg

